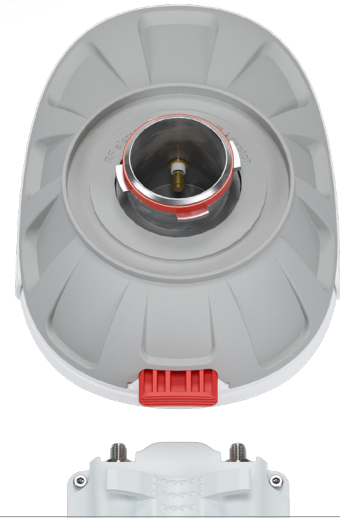


# TwistPort™ Adaptor for Mimosa A5x

TPA-A5x ensures Mimosa A5x compatibility with any TwistPort™ antenna. TPA-A5x mounts the radio and protects the radio from the environment at the same time.

Connecting and removing the radio from the TwistPort™ Adaptor is simple, intuitive, and does not require any tools.



## TECHNICAL DATA

Antenna Connection	TwistPort - Quick Locking Waveguide Port
Radio Connection	2x Slide-On RP-SMA
Materials	Insert - Aluminium Alloy Adaptor - UV stabilized and weather resistant ABS plastic
Flame Rating	UL 94 HB
Temperature	-40°C to +60°C (-40°F to +140°F)
Wind Survival	160 km/h
Weight	0.35 Kg / 0.77 lbs – single unit 0.59 Kg / 1.30 lbs – single unit incl. package 6.95 Kg / 15.3 lbs – carton (10 units)
Single Unit	Retail Box: 19.8 x 13.7 x 11.4 cm / 7.8 x 5.4 x 4.9 inch
10 Units	Carton Box: 57.0 x 27.0 x 21.0 cm / 22.4 x 10.6 x 8.3 inch

## PERFORMANCE

Frequency Range	5180 - 6400 MHz
Polarization	Dual Linear H + V
VSWR Max	1.8
Impedance	50 Ohm

## COMPATIBLE WIRELESS PLATFORMS

RF elements®	any TwistPort™ Antenna
Mimosa Networks®	A5x

## PACKAGE CONTENTS

TwistPort™ Adaptor

## PRODUCT DIMENSIONS

