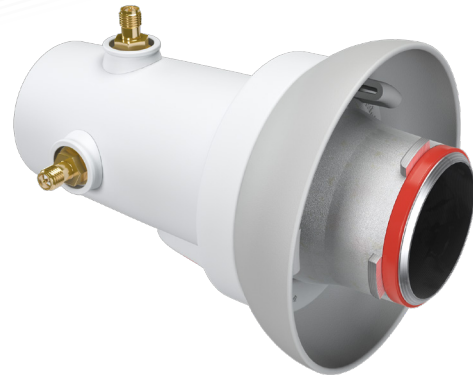


TwistPort™ Adaptor with SMA connectors

ADAPTOR WITH TWO RP-SMA FEMALE CONNECTORS

The TwistPort™ Adaptor with SMA connectors is designed to provide two RP-SMA female coaxial interface (dual linear H+V) and can be connected to TwistPort™ enabled antennas.



TECHNICAL DATA

Antenna Connection	TwistPort - Quick Locking Waveguide Port
Radio Connection	2x RP-SMA female
Materials	Insert - Aluminium Alloy Adaptor - UV stabilized and weather resistant ABS plastic
Flame Rating	UL 94 HB
Temperature	-40°C to +60°C (-40°F to +140°F)
Wind Survival	160 km/h
Weight	0.21 kg / 0.46 lbs – single unit 0.28 kg / 0.61 lbs – single unit incl. package 29.0 kg / 63.9 lbs – carton (100 units)
Single Unit	Retail Box: 155 x 100 x 97 mm / 6.1 x 3.9 x 3.8 inch
100 Units	Carton Box: 990 x 480 x 320 mm / 38.9 x 18.9 x 12.6 inch

PERFORMANCE

Frequency Range	See antenna datasheet for frequency range
Polarization	Dual Linear H + V
VSWR Max	1.8
Impedance	50 Ohm

COMPATIBLE WIRELESS PLATFORMS

RF elements® any TwistPort™ Antenna

PACKAGE CONTENTS

TwistPort™ Adaptor

PRODUCT DIMENSIONS

