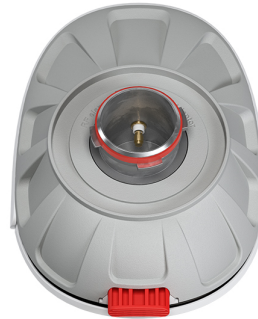


# UltraHorn™ TP 5-24

# TPA for PAF

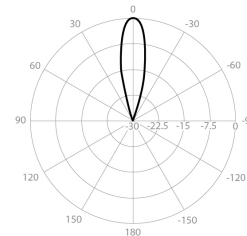


## PERFORMANCE

### UH-TP-5-24

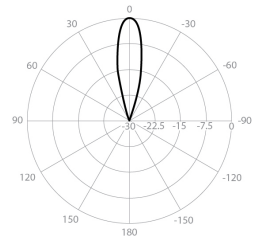
|                            |                   |
|----------------------------|-------------------|
| Gain                       | 24 dBi            |
| Frequency Range            | 5180 - 6775 MHz   |
| Azimuth Beam Width -6 dB   | H 16° / V 15°     |
| Elevation Beam Width -6 dB | H 15° / V 16°     |
| Beam Efficiency            | 99%               |
| Front-to-Back Ratio (Min)  | 40 dB             |
| <b>TPA-PAF</b>             |                   |
| Polarization               | Dual Linear H + V |
| Impedance                  | 50 Ohm            |

**Azimuth Pattern H**



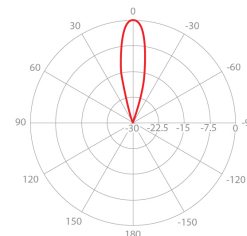
H - Port Pattern Azimuth 5.5 GHz

**Elevation Pattern H**



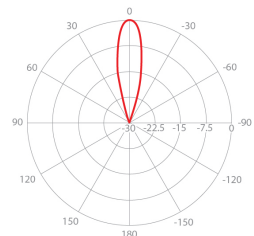
H - Port Pattern Elevation 5.5 GHz

**Azimuth Pattern V**



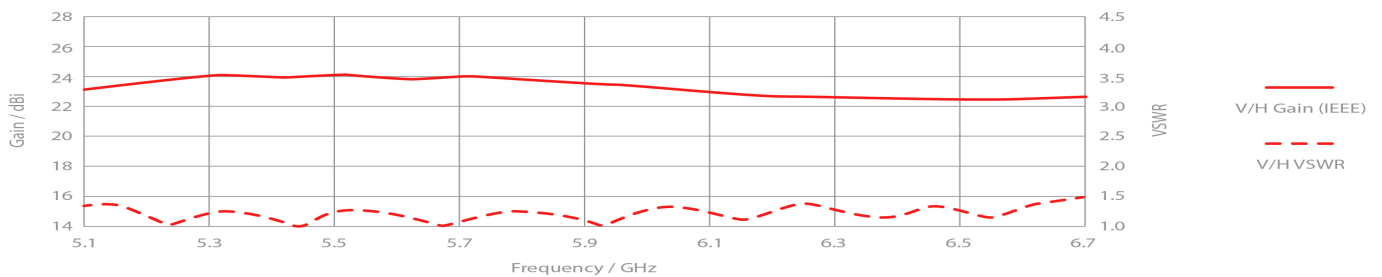
V - Port Pattern Azimuth 5.5 GHz

**Elevation Pattern V**



V - Port Pattern Elevation 5.5 GHz

## REALIZED GAIN AND VSWR



## NOMINAL GAIN

