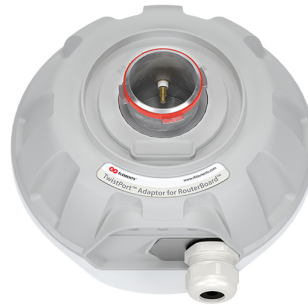


# UltraHorn™ TP 5-24

# TPA RBC



## PERFORMANCE

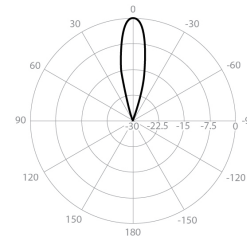
### UH-TP-5-24

Gain	24 dBi
Frequency Range	5180 - 6775 MHz
Azimuth Beam Width -6 dB	H 16° / V 15°
Elevation Beam Width -6 dB	H 15° / V 16°
Beam Efficiency	99%
Front-to-Back Ratio (Min)	40 dB

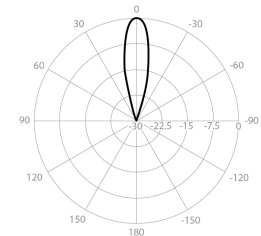
### TPA-RBC

Polarization	Dual Linear H + V
Impedance	50 Ohm

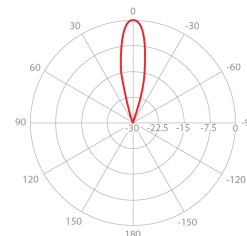
Azimuth Pattern H



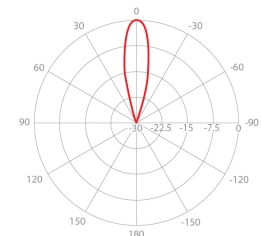
Elevation Pattern H



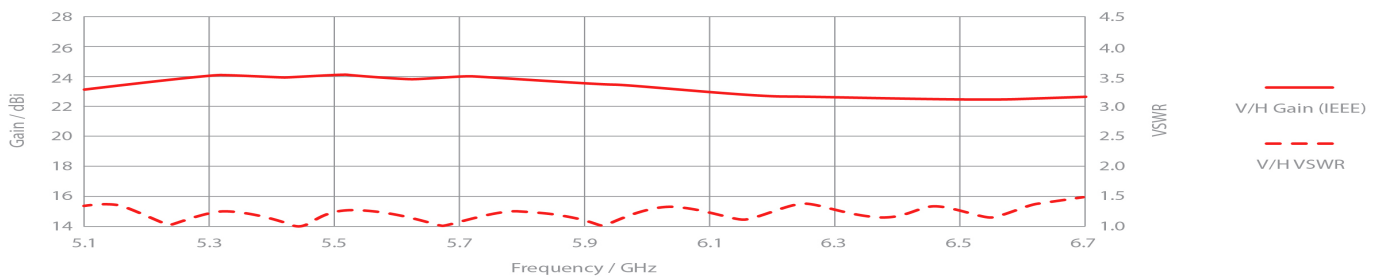
Azimuth Pattern V



Elevation Pattern V



## REALIZED GAIN AND VSWR



## NOMINAL GAIN

