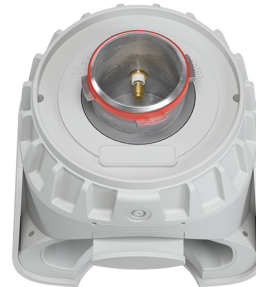


UltraHorn™ TP 5-24

TPA for Rocket M5

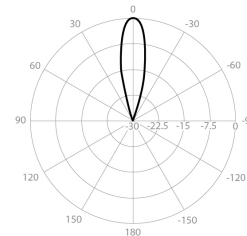


PERFORMANCE

UH-TP-5-24

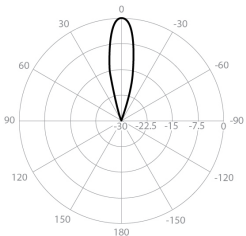
Gain	24 dBi
Frequency Range	5180 - 6775 MHz
Azimuth Beam Width -6 dB	H 16° / V 15°
Elevation Beam Width -6 dB	H 15° / V 16°
Beam Efficiency	99%
Front-to-Back Ratio (Min)	40 dB
TPA-RM5	
Polarization	Dual Linear H + V
Impedance	50 Ohm

Azimuth Pattern H



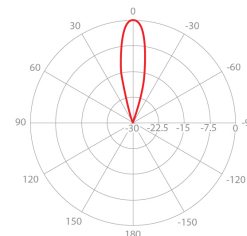
H - Port Pattern Azimuth 5.5 GHz

Elevation Pattern H



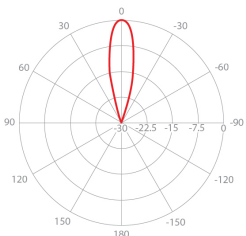
H - Port Pattern Elevation 5.5 GHz

Azimuth Pattern V



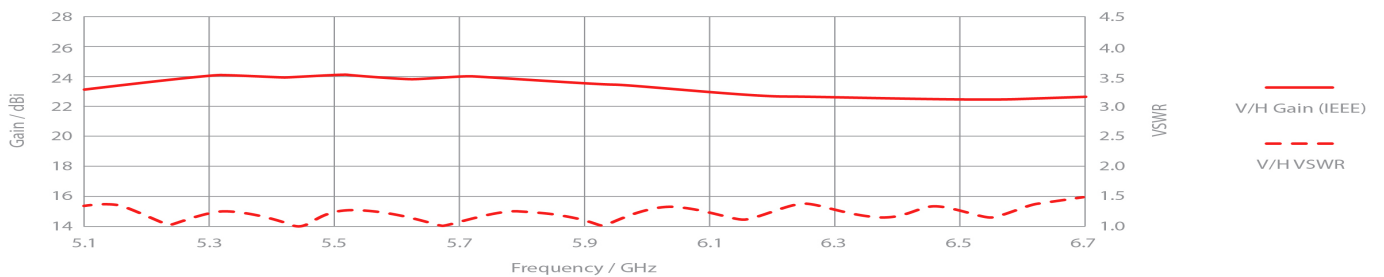
V - Port Pattern Azimuth 5.5 GHz

Elevation Pattern V



V - Port Pattern Elevation 5.5 GHz

REALIZED GAIN AND VSWR



NOMINAL GAIN

