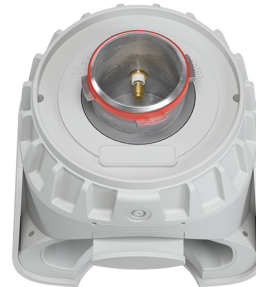


UltraDish™ TP 27

TPA for Rocket M5



PERFORMANCE

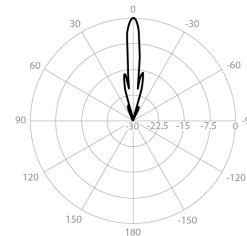
UD-TP-27

Gain	27.5 dBi
Frequency Range	5180 - 6775 MHz
Azimuth Beam Width -6 dB	H 10° / V 9°
Elevation Beam Width -6 dB	H 9° / V 10°
Beam Efficiency	61%
Front-to-Back Ratio (Min)	37 dB

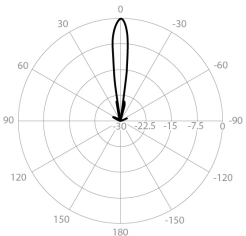
TPA-RM5

Polarization	Dual Linear H + V
Impedance	50 Ohm

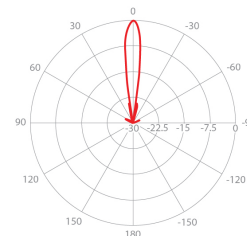
Azimuth Pattern H



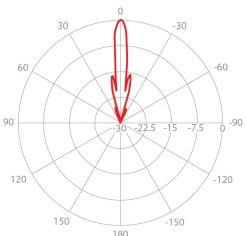
Elevation Pattern H



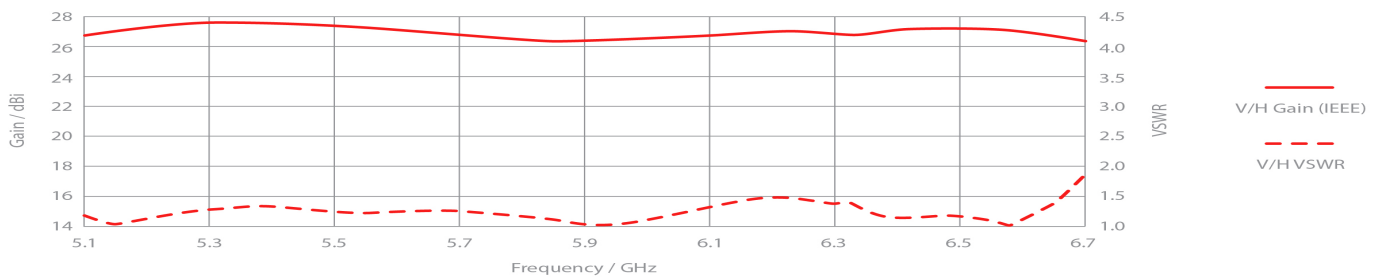
Azimuth Pattern V



Elevation Pattern V



REALIZED GAIN AND VSWR



NOMINAL GAIN

