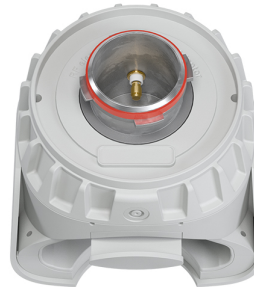


UltraDish™ TP 21

TPA for Rocket 5 AC

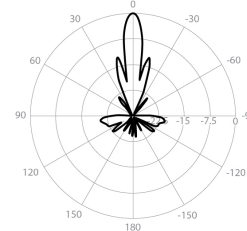


PERFORMANCE

UD-TP-21

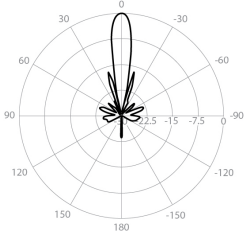
Gain	21.2 dBi
Frequency Range	5180 - 6775 MHz
Azimuth Beam Width -6 dB	H 14° / V 13°
Elevation Beam Width -6 dB	H 13° / V 14°
Beam Efficiency	30%
Front-to-Back Ratio (Min)	28 dB
TPA-R5AC	
Polarization	Dual Linear H + V
Impedance	50 Ohm

Azimuth Pattern H



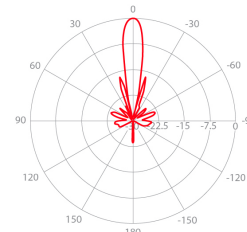
H - Port Pattern Azimuth 5.6 GHz

Elevation Pattern H



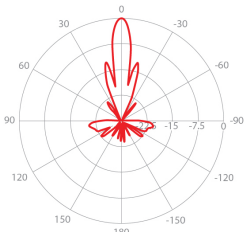
H - Port Pattern Elevation 5.6 GHz

Azimuth Pattern V



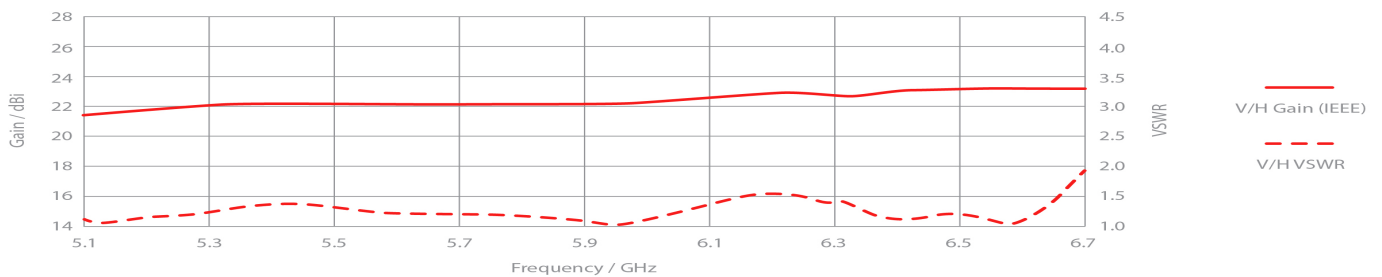
V - Port Pattern Azimuth 5.6 GHz

Elevation Pattern V



V - Port Pattern Elevation 5.6 GHz

REALIZED GAIN AND VSWR



NOMINAL GAIN

