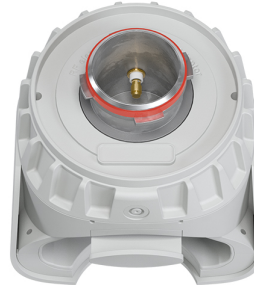


UltraDish™ TP 24

TPA for Rocket 5 AC

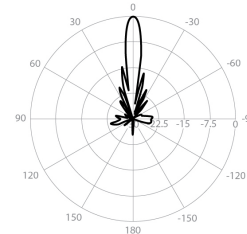


PERFORMANCE

UD-TP-24

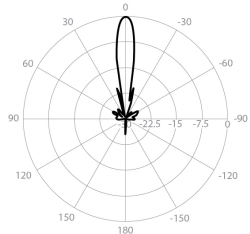
| | |
|----------------------------|-------------------|
| Gain | 24.4 dBi |
| Frequency Range | 5180 - 6775 MHz |
| Azimuth Beam Width -6 dB | H 12° / V 11° |
| Elevation Beam Width -6 dB | H 11° / V 12° |
| Beam Efficiency | 40% |
| Front-to-Back Ratio (Min) | 35 dB |
| TPA-R5AC | |
| Polarization | Dual Linear H + V |
| Impedance | 50 Ohm |

Azimuth Pattern H



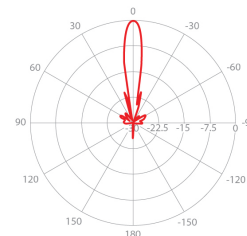
H - Port Pattern Azimuth 5.6 GHz

Elevation Pattern H



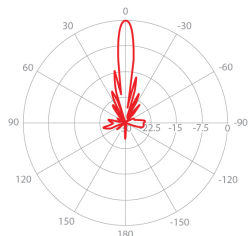
H - Port Pattern Elevation 5.6 GHz

Azimuth Pattern V



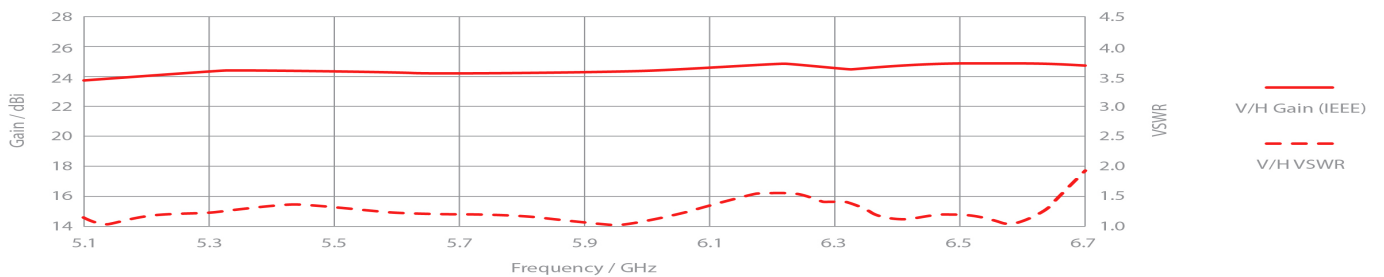
V - Port Pattern Azimuth 5.6 GHz

Elevation Pattern V



V - Port Pattern Elevation 5.6 GHz

REALIZED GAIN AND VSWR



NOMINAL GAIN

